



# Join Us!

Help Preserve Our  
Natural Resources  
*through*

**education  
advocacy  
volunteerism**

[www.midmeac.org](http://www.midmeac.org)

## Air Quality

Energy Waste Reduction  
Non Motorized Transportation Initiatives  
Smart Commute / Event Bike Parking

## Land Use

Land Use Lecture Series First Friday Sept - May  
Recycling / Recycle Rama  
Habitat Preservation & Development  
Community Rain Gardens

## Water Protection

Watershed & Water Infrastructure Education  
Watershed Sampling and Reporting  
Lake Water Quality Training

## We Connect Community for Environmental Stewardship

- ▶ Zachary and his upward-bound classmates aim to be the first in their families to attend college. They build science credentials through water chemistry testing and aquatic species identification.
- ▶ Caleb and his siblings are educated at home. They put on waders to collect aquatic insects, exposing them to field science. Identifying the collected samples gives them laboratory experience.
- ▶ Virginia is an active senior volunteer at recycling events. She and other crafters use collected yarn and fabric to knit and quilt; then donate to local families.
- ▶ Jeffrey survived pediatric cancer and earned a Master's degree in water policy. Jethro is a differently-abled adult with a passion for bicycle touring.

MidMEAC programs connect our community with education, advocacy and volunteer opportunities.



## MidMichigan Environmental Action Council

405 Grove Street  
East Lansing, MI 48823  
tel: 517.292.3078  
[www.midmeac.org](http://www.midmeac.org)

MidMEAC is a 501(c)(3) charitable organization



education  
advocacy  
volunteerism

[www.midmeac.org](http://www.midmeac.org)



## Air Quality Advocacy

MidMEAC's Smart Commute challenges area residents to explore multi-modal transportation options. Participants log thousands of miles over two work-weeks, building a lasting impact on individual behavior. We ask employers to encourage practices to reduce emissions, such as ride-matching and tele-commuting.

With help from the Tri-County Bicycling Association and League of Michigan Bicyclists, we provide secure bike parking at popular community events, encouraging people to leave their cars at home.

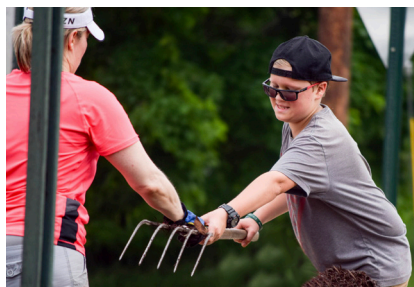
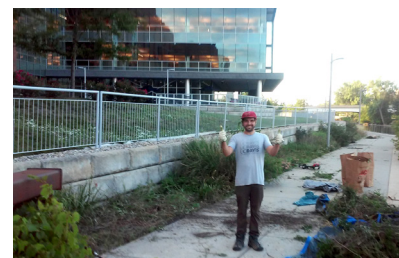


SWAT is a local initiative to reduce energy waste. Stronger When Acting Together aligns community groups, non-profit organizations, utilities, and local governments to engage residents and business managers/owners in discussions to help reduce energy usage and costs.

## Volunteerism for Sustainable Land Use

MidMichigan Environmental Action Council and the Sierra Club are partnering to protect pollinators and create new pollinator habitat in our urban landscape.

This initiative engages volunteers in expanding habitat for bees and butterflies along trails and in parks. Concurrent educational activities encourage people to create pollinator-friendly habitat in their yards through proper plant choices and reduced pesticide usage.



Teaming with local governments, neighborhood organizations, and volunteers, we used low impact design (LID) principles to transform an unkempt grassy roundabout center into a functional rain garden. We planted native species, preferred for their deep root systems, to reduce storm water runoff at a busy gateway intersection.

Working in the framework of the Great Lakes Clean Communities Network, we created a blueprint for small-scale LID projects that others can replicate in their communities to manage storm water and connect habitat green spaces.

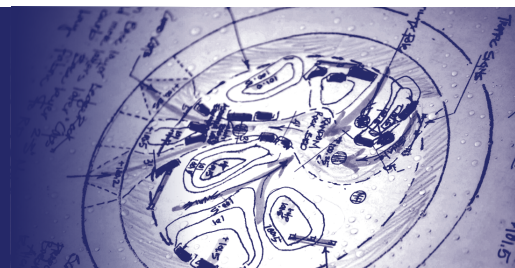
Working with regional recycling leaders, we have reclaimed and repurposed many tons of unwanted materials. Michigan State University collects books and bikes; a pharmacist is on hand to make sure unwanted medications are properly handled. Fabrics go to groups that include Rosemary and her friends, who use clean materials to make the quilts they donate.





education  
advocacy  
volunteerism

www.midmeac.org



## Partnerships for Water Quality

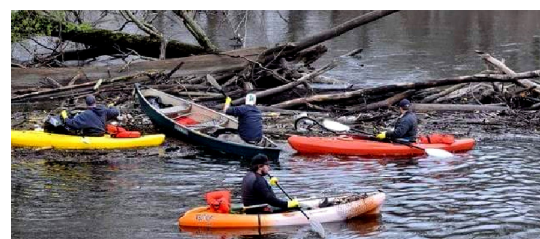


With help from MiCorps, we expanded our more than decade-long stream monitoring and water quality reporting program. We collect aquatic insects and observe other aquatic life to develop stream scores for each monitoring site.

Data from our program is used to support the Red Cedar Watershed Management Plan and develop a local ECOscore.

We form volunteer teams with watershed organizations, Conservation Districts, and other non profit groups. Our partnerships and volunteers remove thousands of pounds of debris and recyclable materials from area rivers.

Together we advocate and educate to raise watershed awareness.



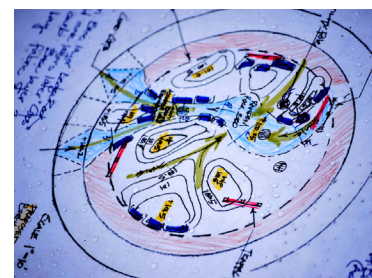
## Science, Technology, Engineering, and Math (STEM) for Environmental Stewardship

MidMEAC partners with governmental agencies, municipalities, educators and others to develop and deliver environmental science programs and activities.

MidMEAC offers watershed education programs that bring visitors to unique naturalized areas where they can experience the benefits of Low Impact Design (LID) infrastructure solutions. Discussion includes pollutant reduction, flood protection, economic development opportunities, and habitat connectivity.

Working with environmental scientists and engineers, we develop projects and educational programs for youth and adults to discuss the science and technology involved in reclaiming and naturalizing parts of the urban landscape.

Students in environmental science, natural resources, and other degree programs work with us on model projects that can be replicated to protect our resources.



## MidMEAC Partners

We work with educational institutions, non profit organizations, and governmental agencies to deliver environmental education and stewardship programs. Our partners include:

Michigan State University  
Lansing Community College  
Okemos High School  
County Drain Commissioners

Michigan Dept. of Environmental Quality  
Michigan Dept. of Natural Resources  
Tri-County Regional Planning Commission  
Lansing Board of Water and Light

CATA  
Conservation Districts  
Regional Recycling Committee  
Tri-County Bicycle Association  
...and more.

# We are excited about the future of Environmental Stewardship in MidMichigan

You can help us grow programs that connect our community and inspire the next generation of environmental scientists and stewards.

- The Grand \$5,000  
8 tickets all events, Distinguished Service Award and Pillar Award Sponsor, Sponsor Signs, Newsletter & Social Media (36 mentions to 5,000 subscribers), all events
- Red Cedar \$3,000  
6 tickets all events, Pillar Sponsor, Sponsor Signs, Newsletter & Social Media, Awards, Equinox Party, Land Use Lunch
- Looking Glass \$2,000  
6 tickets all events, Pillar Sponsor, Sponsor Signs, Newsletter & Social Media, Awards, Land Use Lunch
- Sycamore Creek \$1,000  
4 tickets all events, Pillar Sponsor, Sponsor Signs, Newsletter & Social Media, Solstice Party, Land Use Lunch
- Wolf Creek \$500  
4 tickets Awards, Pillar Sponsor, Sponsor Signs, Newsletter & Social Media
- Streamside \$250 2 tickets to Awards, Sign Newsletter & Social Media
- Tell us what you're looking for.  
Return this form or phone us at 517.292.3078

---

Sponsor Name \_\_\_\_\_

---

Address \_\_\_\_\_

---

Preferred Phone \_\_\_\_\_

---

Preferred email \_\_\_\_\_

---

Authorized Signature \_\_\_\_\_

## Payment Options

Make check payable to Mid-MEAC  
Mail to 405 Grove Street, East Lansing MI 48823 Amount \_\_\_\_\_

PayPal/Visa/Mastercard \$ \_\_\_\_\_

Recurring payment \$ \_\_\_\_\_ per month \$ \_\_\_\_\_ per quarter

Card# \_\_\_\_\_ Exp. MM/YY \_\_\_\_\_ CSV \_\_\_\_\_



**education  
advocacy  
volunteerism**

Partner with us to build resilient rivers, cleaner cities, and sustainable communities in our Great Lakes state.

Contributors receive event tickets and promotion on event signage, in social media posts, press releases, and other features on our website.

## Events

Environmental Stewardship Awards  
February

Smart Commute Options  
Spring and Summer Festivals

Autumn Equinox Celebration  
September

Land Use Lecture Series  
September through May

## Outreach

Facebook 1600+ followers

Twitter 1400+ followers

Newsletter 3000+ subscribers

Awards 100 attendees

Smart Commute & VBP 1000s

Solstice 125 attendees

Land Use Lectures 30+ per month

## Contact

517.292.3078

director@midmeac.org

www.midmeac.org

*Founded on Earth Day in 1994, our mission is to research, develop, and advocate for educational programs focused on preventing or remedying degradation of our natural resources.*

MidMEAC is a 501(c)(3) charitable organization.